

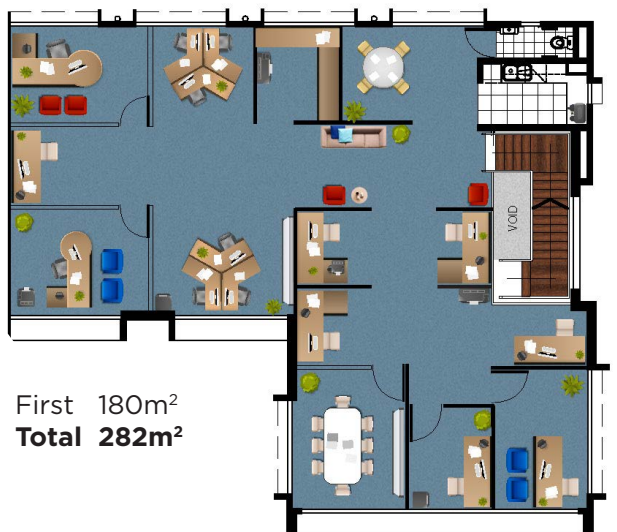


POD 10 - 282m² - Premium new office for lease

Ready to occupy, Pod 10 in CityPods is a premium new office space with maximum flexibility for your business to grow and thrive in a centrally located precinct with unrivalled access.

KEY FEATURES - POD 10

- Two storey stand-alone office
- Individual on-building signage + pylon signage
- Polished concrete floors, concrete reception desk, open plan office and disabled amenities at street level; open plan, carpeted office space with kitchen and bathroom on the first floor



LEASE SUMMARY

Net rental: \$375/m² pa + GST (Including outgoings)

Carparking: 6 bays
\$990/bay pa + GST

To inspect Pod 10 CityPods, 249 Scottsdale Drive contact:

Marcus Weld
0414 726 207
mweld@robina.com.au

While every endeavour has been made to ensure accuracy of the information, RPA Properties Pty Ltd, Robina Projects Australia Pty Ltd and any subsidiaries ("Robina Group") provide no warranty, guarantee or representation regarding its accuracy, reliability and completeness. This document has been prepared as a guide for your possible lease and is partly based on information from external sources which may or may not be relevant to your transaction. As this document has been provided for reasons of convenience (and can be independently verified by you) Robina Group will not be liable (in tort, contract or otherwise) for any loss suffered as a result of you relying on information provided. No warranties or assurances can be given about the suitability of this document for any specific transaction. You should seek legal advice or other professional advice.

LEASE INCENTIVES
YOU WON'T WANT TO MISS

